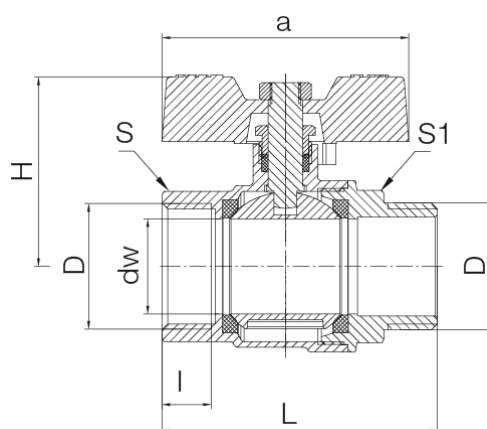


## Ball valves OMAX

Full-port ball valve with nut on stem and aluminium butterfly (female-male version)



| DN | Code    | Dimensions |      |    |    |      |      |      |    |    | EAN13         |
|----|---------|------------|------|----|----|------|------|------|----|----|---------------|
|    |         | Size       | D    | I  | dw | L    | a    | H    | S  | S1 |               |
| 15 | 1402300 | 1/2"       | G1/2 | 12 | 15 | 57,5 | 51,5 | 37   | 25 | 22 | 5902273572213 |
| 20 | 1403300 | 3/4"       | G3/4 | 11 | 20 | 63   | 51,5 | 40,5 | 31 | 31 | 5902273572220 |
| 25 | 1404300 | 1"         | G1   | 13 | 25 | 72,5 | 65   | 50   | 38 | 38 | 5902273572237 |

### Product usage:

Used as shut-off fittings in cold and hot water systems, in central heating systems (including solar systems) where the working medium is water or water / glycol solution (up to 50%)

### Type:

Straight ball valves

### Guarantee:

25-year

### Technical data/Operating parameters:

Max pressure: 3,0 MPa

Max temperature: 150°C

### Used materials:

body, nut, ball, stem, adjustable stem nut: brass;

ball and stem seal: PTFE (teflon);

butterfly handle: aluminium alloy

### Finish:

body, nut: nickel; ball: chrome