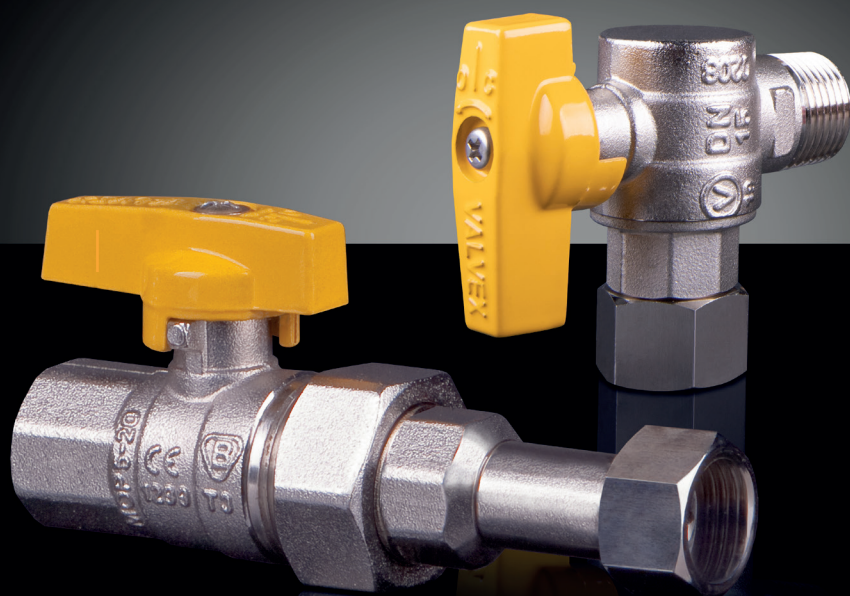


WAY TO  
CONNECT

VALVEX<sup>PRO</sup>



# ORION

GAS BALL VALVE WITH SWIVEL NUT  
AND ALUMINIUM BUTTERFLY

**MATCH FOR  
ALL GAS BOILERS  
IN DOMESTIC  
INSTALLATIONS**

**DN15 & DN20**



CE 1299

Cut-off gas ball valve with swivel nut ORION is intended for use in connection installations for a gas boiler. The valve is characterized by a unique body structure.

A swivel nut and a flat NBR gasket ensure a durable and secure connection. One valve replaces several couplings, extensions and pipe unions.

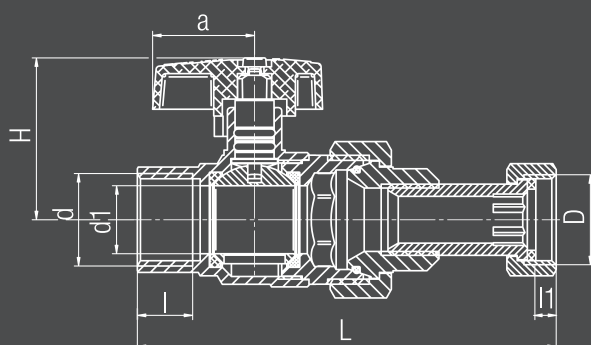
The use of the valve allows easy transitions to various installation systems: pex, pex / Al, copper, PP. The valve is made of CW617N brass, flat NBR gasket in the set.

**PRESSURE CLASS**

**MOP 5**

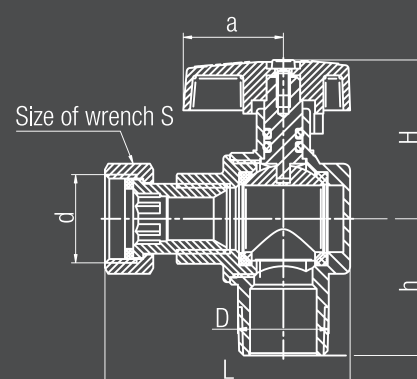
**WORK TEMPERATURE**

**-20°C DO +60°C**



**Straight valve**

CODE	DN	D	d	d1	L	a	H	I	l1
3402100	15	1/2"	Rp 1/2-14	ø15	123	30	43	15	7
3403100	20	3/4"	Rp 3/4-14	ø20	123	30	48	16,3	7

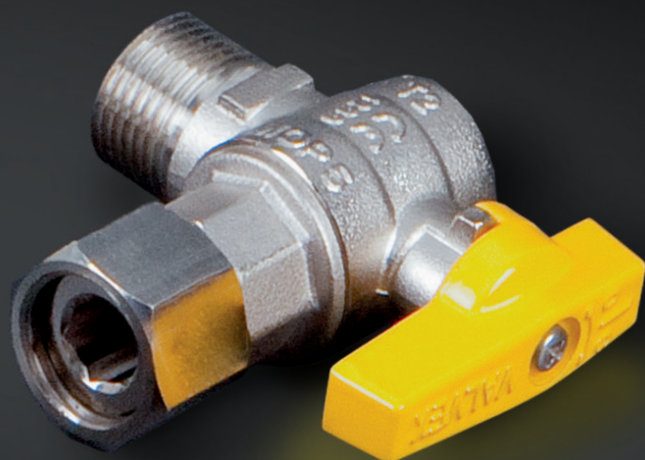


**Angle valve**

CODE	DN	D	d	L	a	H	h
3402080	15	1/2"	R 1/2	66,5	30	43	35
3403080	20	3/4"	R 3/4	74	30	48	41

# ORION

## GAS BALL VALVE WITH SWIVEL NUT AND ALUMINIUM BUTTERFLY



- ▶ **EASY ASSEMBLY** - simple and quick connection to the boiler thanks to swivel nut,
- ▶ **RELIABLE CONNECTION** - thanks to the used nut and NBR flat gasket,
- ▶ **ECONOMY OF SPACE** - angle version of the valve saves space under the gas boiler,
- ▶ **HIGH QUALITY OF MATERIALS** - a guarantee of long and reliable use,
- ▶ **UNIQUE DESIGN** - ensures safe and correct operation of the gas installation.

### MATERIALS:

- **Body and ball:** Brass CW617 N; ball seal: PTFE;  
stem seal: NBR, flat seal NBR; butterfly handle: aluminum alloy
- **Flow cut-off:** Yes
- **Installation location:** Cut-off valves for devices such as a gas boiler
- **Medium:** Gas
- **Temperature range:** -20°C to +60°C
- **Pressure of medium:** PN10
- **Pressure class:** MOP 5
- **Nominal flow rate (straight valve):** 5,8 m<sup>3</sup>/h / 10,2 m<sup>3</sup>/h
- **Nominal flow rate (angle valve):** 4,1 m<sup>3</sup>/h / 7,7 m<sup>3</sup>/h
- **Guarranty:** 25 years



## WAY TO CONNECT

**VALVEX**<sup>TM</sup>  
Power of Quality

Valvex S.A., ul. Nad Skawą 2, 34-240 Jordanów, Poland  
tel. +48 18 269 32 20, 269 32 49, fax +48 18 269 32 11  
e-mail: [valvex@valvex.com](mailto:valvex@valvex.com)  
[www.valvex.com](http://www.valvex.com)