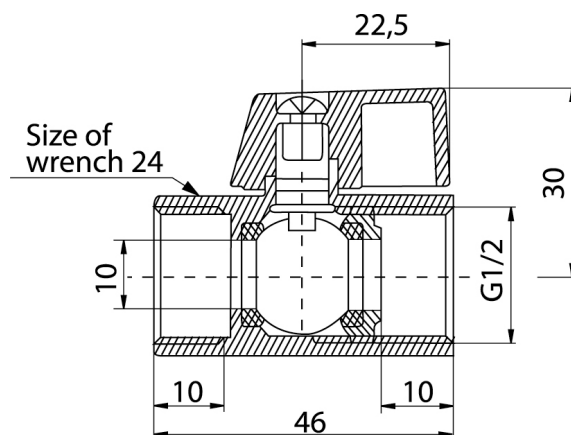


Ball valves MINI

Chrome plated ball valve (female-female version)



DN	Code	Dimensions	EAN13
15	1470000	1/2"	5907451926727

Product usage:

In cold and hot water systems and central heating systems as shut off valves

Type:

Straight ball valves

Guarantee:

25-year

Technical data/Operating parameters:

Max pressure: 1,0 MPa,

Max temperature: 90°C

Used materials:

body, nut, ball, stem: brass;

ball seal: PTFE (teflon);

stem seal: O-ring seal, rubber NBR;

lever: aluminium alloy

Finish:

body, nut, ball: chrome